

SADP Software

User Manual

UD.6L0202D1297A01

Thank you for purchasing our product. This manual applies to SADP software, please read it carefully for the better use of this software. The contents in this manual are subject to change without notice.

Contents

Chapter 1 Introduction.....	3
1.1 Overview	3
1.2 System Requirements.....	3
1.3 Conventions.....	3
1.4 Version Information	3
Chapter 2 Operating SADP Software	4
2.1 Searching Active Devices Online	4
2.2 Modifying Network Parameters	5
2.3 Restoring Default Password.....	6

Chapter 1 Introduction

1.1 Overview

Search Active Devices Protocol software is a kind of user-friendly and installation-free online device search tool. It searches the active online devices within your subnet and displays the information of the devices. You can also modify the basic network information of the devices using this software.

1.2 System Requirements

Operating System: Microsoft Windows 7 / Windows 2008 32 / 64-bit
Windows XP / Windows 2003 32-bit

CPU: Intel Pentium IV @ 3.0 GHz or above

RAM: 1G or above


Video Card: RADEON X700 Series

Display: 1024*768 resolution or above

1.3 Conventions

In order to simplify the description, we define the “SADP software” as “software” in the following chapters.

1.4 Version Information

After installing the software, run the software and click  on the control panel to enter the SADP software interface.

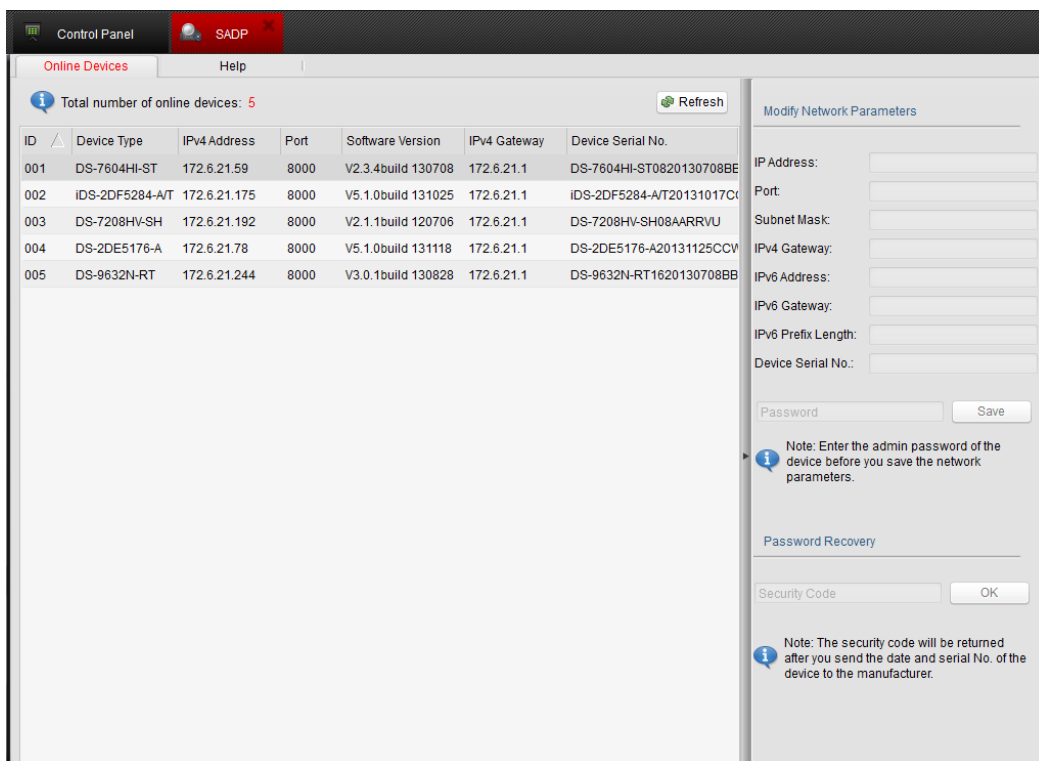
Click the **Help > About** tab at the top to view the version information or click **Help > User Manual** to get the User Manual of the software.

Chapter 2 Operating SADP Software

2.1 Searching Active Devices Online

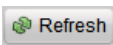
Task1: Search Online Devices Automatically



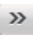

After launching the SADP software, it automatically searches the online devices every 15 seconds from the subnet where your computer locates. It displays the total number and information of the searched devices in the **Online Devices** interface. Device information including the device type, IP address, port number, gateway, etc. will be displayed.



Note: Device can be searched and displayed in the list in 15 seconds after it went online; it will be removed from the list in 45 seconds after it went offline.

Task2: Search Online Devices Manually

You can also click  to refresh the online device list manually. The newly searched devices will be added to the list.

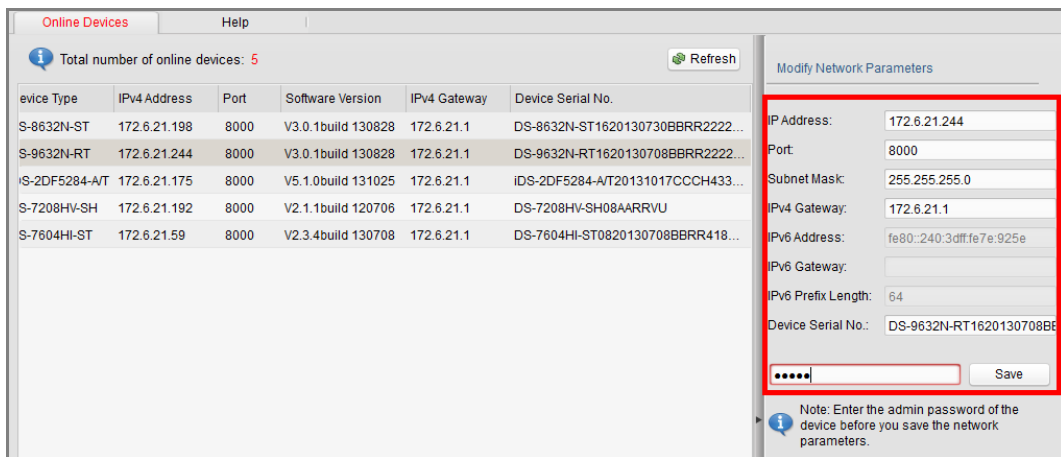
Note: You can click  or  on each column heading to order the information; you can click  to expand the device table and hide the network parameter panel on the right side, or click  to show the network parameter panel.

2.2 Modifying Network Parameters

Task 1: Modifying Network Parameters of One Device

Steps:

1. Select the device to be modified in the device list and the network parameters of the device will be displayed in the **Modify Network Parameters** panel on the right side.
2. Edit the modifiable network parameters, e.g. IP address and port No..
3. Enter the password of the admin account of the device in the **Password** field and click **Save** to save the changes.



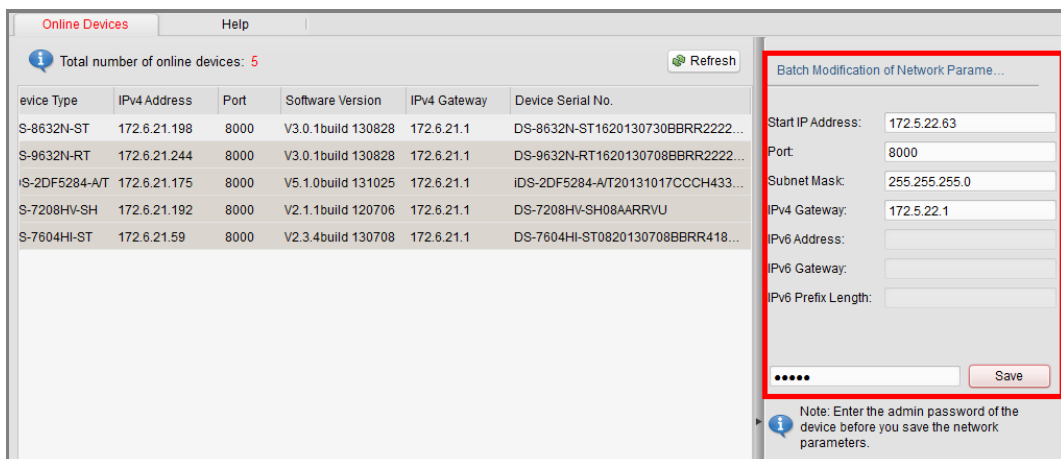
Task 2: Modifying Network Parameters of Multiple Devices

Steps:

1. Click and drag to select multiple devices to be modified in the device list.
2. In the **Modify Network Parameters** panel on the right side, edit the modifiable network parameters, e.g. start IP address and port.

Example: If you select 3 devices for modification and set the start IP address as 172.5.22.63, then the IP addresses of the devices will be modified as 172.5.22.63, 172.5.22.64 and 172.5.22.65 in order.

3. Enter the password of the admin account of the devices in the **Password** field and click **Save** to save the changes.

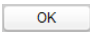


2.3 Restoring Default Password

Steps:

1. Contact our technical engineers to get the security code.

Note: Security code is a series of characters combined by the start time and the serial No. of the device.

2. Input the code in the **Security Code** field and click  to restore the default password of the device.